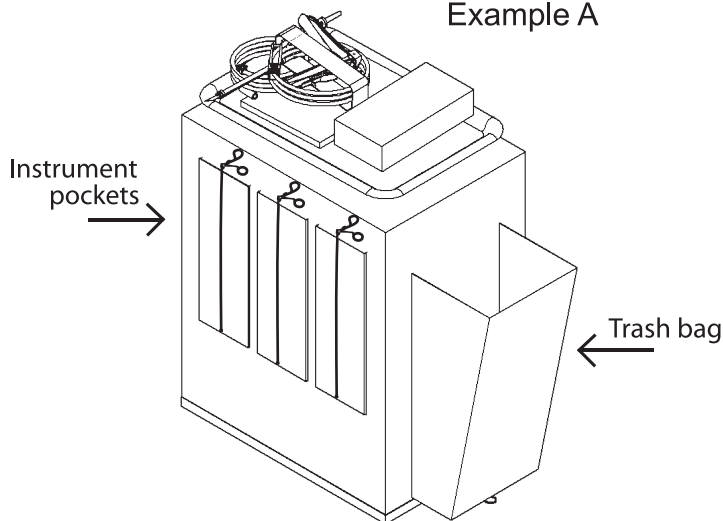


OfficePACK[®]

THE PREMIER PROCEDURE KIT FOR OFFICE HYSTEROSCOPY

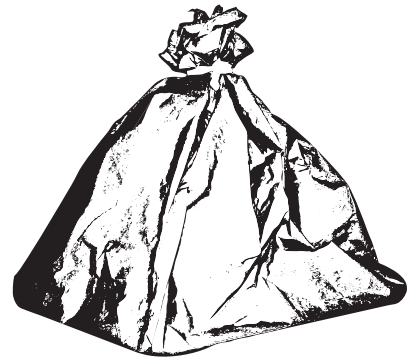
Remove OfficePACK from tyvek bag and place on mayo stand. Unwrap blue mayo drape down and around mayo stand revealing items on tray. After procedure has concluded pull blue mayo drape up and around, enclosing all contents. Use ties to seal off bag and dispose as medical waste. All contents of OBP Medical OfficePACK come sterile ready for use.

Example A



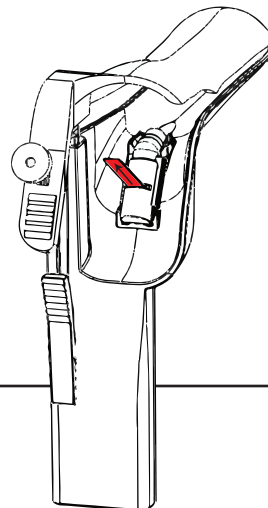
OfficePACK shown opened and set on mayo stand appropriately. Instrument pockets designed to hold grasping forceps, hysteroscope, and other rigid instruments.

Example B



OfficePACK shown with blue mayo drape tied and secured around waste content, ready for disposal.


OBP OfficeSPEC vaginal speculum with built-in light source comes ready to use. Simply pull red tab to activate single-use light source.




Remove white adhesive cover on reverse side of underbuttocks drape in order to use non-slip double sided tape

ENGLISH

Symbols Description

 In this document, indicates conditions or practices that may lead to injury, illness, or death ("WARNING").

 In this document, indicates conditions or practices that could damage the equipment or other property ("CAUTION").

 On the product means consult other accompanying documentation.

 Do not reuse.


REF Preceeds catalogue number.

LOT Preceeds manufacture date.

Intended Use

The OBP OfficeSPEC Disposable Side-Opening Speculum is indicated for use on women undergoing a procedure requiring vaginal access and exposure (e.g., for a pelvic exam or Pap smear). The device uses opposing bi-valve plastic blades to separate the vaginal wall and is intended to expose the interior of the vagina and exterior of the cervix. It may be used with or without a removable light source.

Warnings and Cautions

 **WARNING:** This speculum not for use with laser equipment. It may reflect, transmit, or absorb laser or other photocoagulation energy, possibly resulting in combustion or emission of irritating gases. Please consult your equipment manufacturer.

WARNING: Specula, when in transit or storage, may be subject to damage beyond the control of the manufacturer or supplier.


WARNING: Inspect each speculum prior to use.

WARNING: Treat used vaginal specula as bio hazardous infectious material. Dispose of used vaginal specula in suitable disposal unit or in accordance with local regulations.

WARNING: The speculum in not compatible with gamma radiation or autoclave sterilization.

 **CAUTION:** Used by trained personnel only.


CAUTION: Rx. Only. U.S. federal law restricts this device to sale by or on the order of a physician.

 **OBP Medical Inc**
360 Merrimack St.
Building 9
Lawrence, MA 01843
USA

Symbol Descriptions


 Do not reuse

REF Preceeds catalog number

 Attention, caution, Warning:
See instructions for use


LOT Preceeds manufacture date

Warnings and Cautions

 **WARNING:** This speculum not for use with laser equipment. It may reflect, transmit, or absorb laser or other photocoagulation energy, possibly resulting in combustion or emission of irritating gases. Please consult your equipment manufacturer.

 **WARNING:** Specula, when in transit or storage, may be subject to damage beyond the control of the manufacturer or supplier.

 **WARNING:** Inspect each speculum prior to use.

 **WARNING:** Treat used vaginal specula as bio hazardous infectious material. Dispose of used vaginal specula in suitable disposal unit or in accordance with local regulations.

 **WARNING:** The speculum in not compatible with gamma radiation or autoclave sterilization.

 **CAUTION:** Used by trained personnel only.

 **CAUTION:** Rx. Only. U.S. federal law restricts this device to sale by or on the order of a physician.